

Winona Concrete & Pipe Products Ltd Grimsby Ontario 905-945-8515

5,700 Litre Anerobic Digestor w/ Pump Vault

Actual Working Capacity: 6,130 Litres
 Anerobic Digestor Capacity: 3,776 Litres
 Pump Reserve Capacity: 2,354 Litres

1,601 - 2000 Litres Per Day

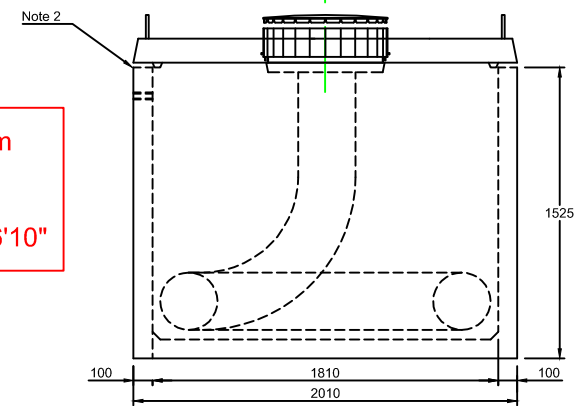
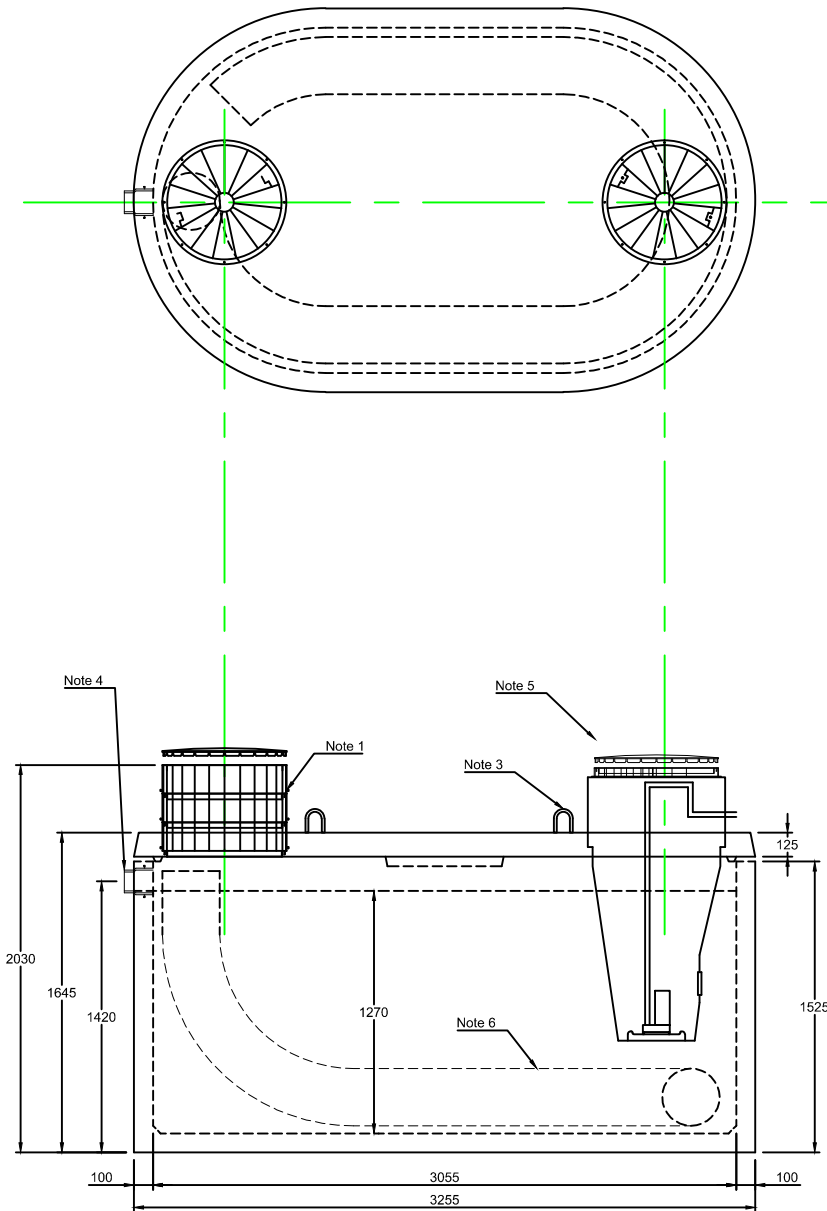
Construction Details

Concrete: Min. 35 MPA @ 28 Days 5 to 8% Air Entrainment
 Reinforcing: 10M bars @ 300 mm centres each way in floor and roof.
 10M bars @ 600 mm centres vertically in walls
 10M bars @ 400 mm centres horizontally in walls
 Minimum cover over reinforcing steel - 25mm

Weight: 5,625 KG

NOTES

1. Cast in access riser 600mm I.D. Polylok
2. Fibrous Mastic Sealant
3. Lifting points four places
4. Cast in Flexible watertight connections
5. Hanging Pump Vault
6. Inner Tube



Excavation Dim
 12' L x 8' W
 Inlet 56" C/L
 Top of Riser 6'10"

Designed Loading 1 Metre Burial over top slab in firm soil for non-vehicular traffic