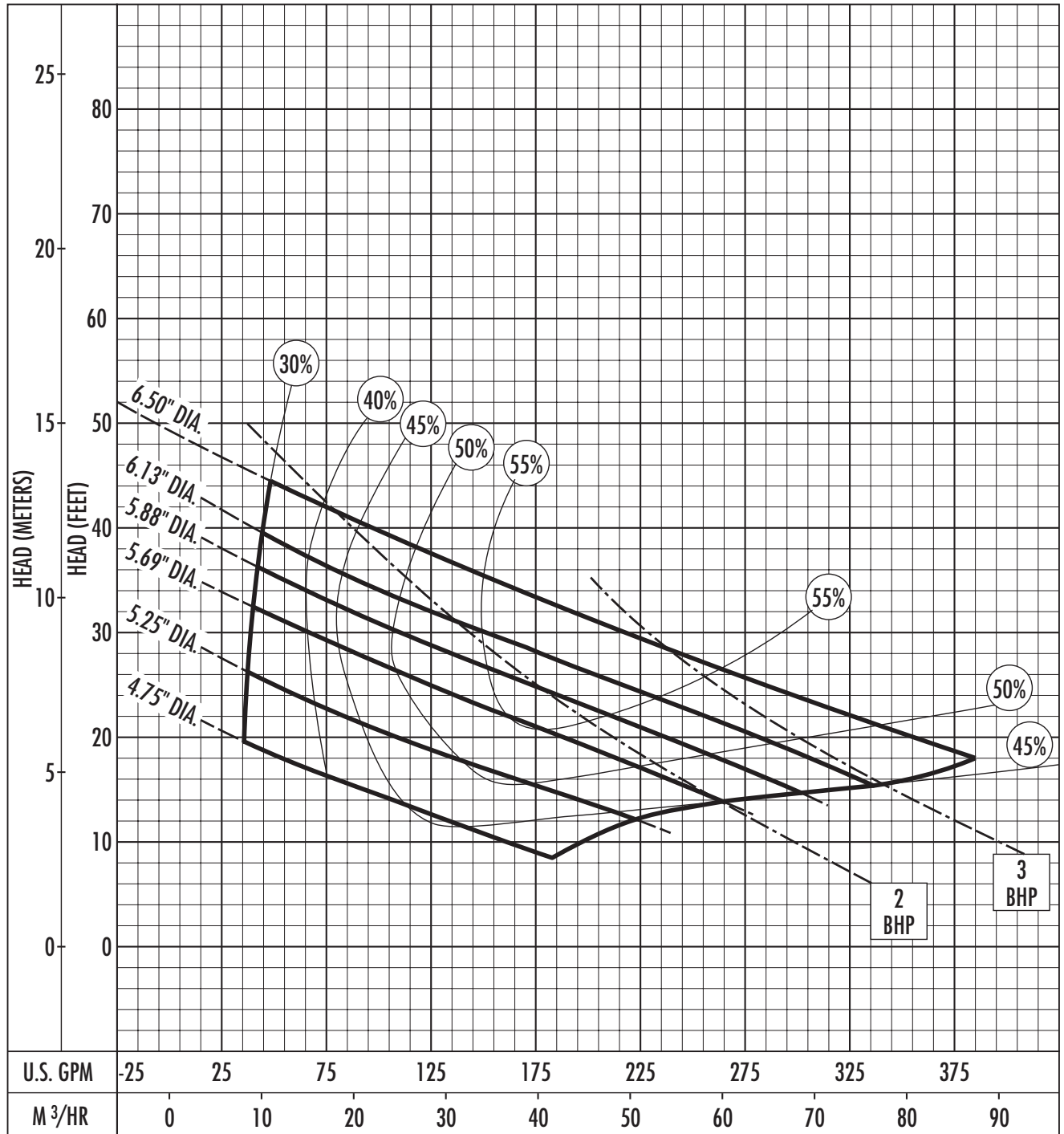


Performance Curve – S3S/S3SD/SB3S/SB3SD

Section **EJECTOR** Page **101**

RPM: **1750** DISCHARGE: **3"** SOLIDS: **2-1/2"**



The curves reflect maximum performance characteristics without exceeding full load (Nameplate) horsepower. All pumps have a service factor of 1.2. Operation is recommended in the bounded area with operational point within the curve limit. Performance curves are based on actual tests with clear water at 70° F. and 1280 feet site elevation.

Conditions of Service: